

Map



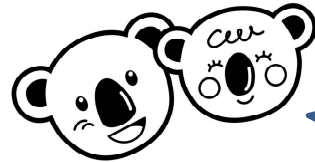
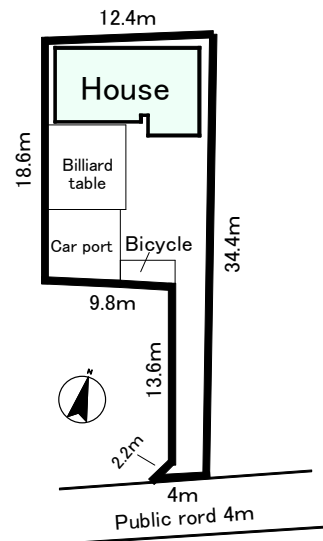
- **Parking Space (4 cars)**
- **Near KYB**
- **With Billiard Table**



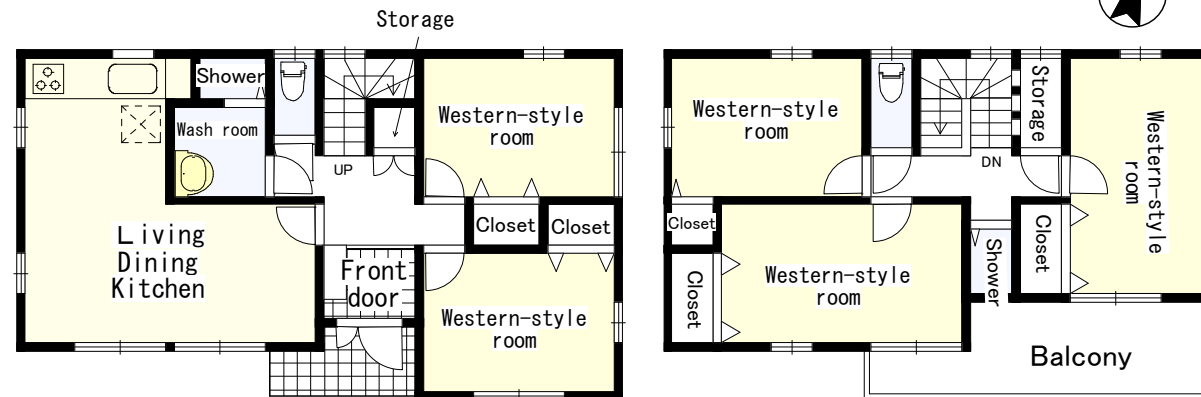
Slightly Used House

Near Station	Meitetsu Hiromisen Kanigawa station	
FLOOR PLAN	5LDK	
Price	¥13,950,000	
Location	Gifu ken Kani shi Dota 4086-3.4087-5	
Access	14 minutes walk to Kanigawa station	
Area	Public Book : 279.59m ²	
Building	Structure	WOODEN HOUSE 2 stories
	Total floor	112.61m ²
	1F: 62.1m ² / 2F: 50.51m ²	
Land Owner		
Present condition	Currently residing	
Year built	14 August 2007	
Turn over	Consult	
Parking	4cars	
Contact roads		
4meters south to the Public road		
Equipment	<ul style="list-style-type: none"> • Water spply(Sewage&drainage) • Electricity • Kitchen system • Shower 	
NB	• Powered by electricity only(No gas)	
Near Dota elementary school and Sonan junior high school.		

Layout drawing



Accessible to schools,transportations&department stores!
A wide space for a family ponding every weekends!
(Barbe-cue,billiards and many more)



※I suppose the current state priority if there is a discrepancy between the drawing and the actual.



岐阜県知事免許(4) 第3877号 (社)岐阜県宅地建物取引業協会会員

Marui real estate

Kani Branch Office

Sanyoudobiru 1F, 1-34-1, Hiromi, Kani-city, Gifu JAPAN

Contact us

☎ 0574-61-5501

FAX 0574-61-0201

取引態様

Intermediary

手数料

(Property Prices × 3% + ¥60,000) + Tax

物件番号

KCM0611

住まい探しはコチラで検索!

マルイ不動産

検索